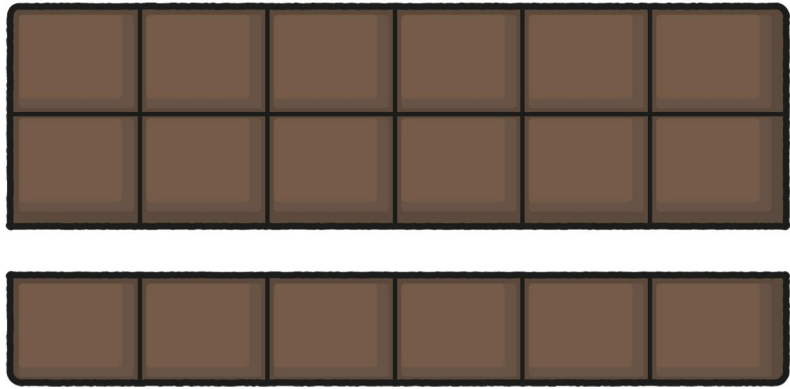


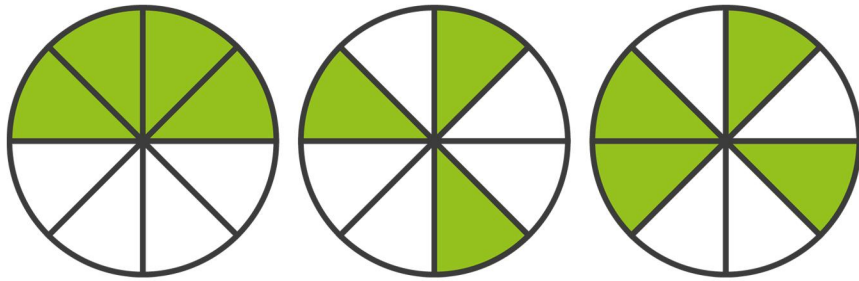
Has the chocolate been shared fairly? If not, how would you make it fair?



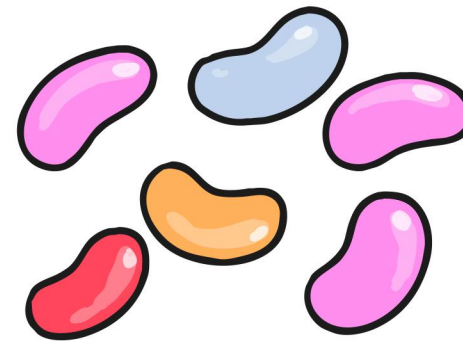
What fraction of the boys are wearing red shirts?



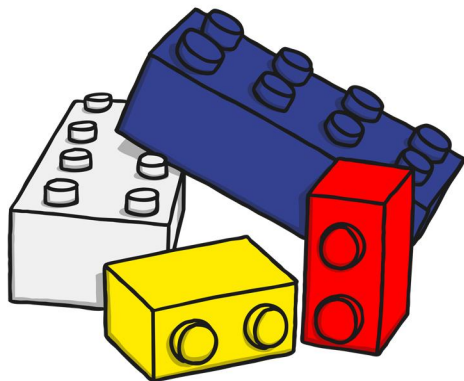
Which of these shapes are $\frac{1}{2}$ green?



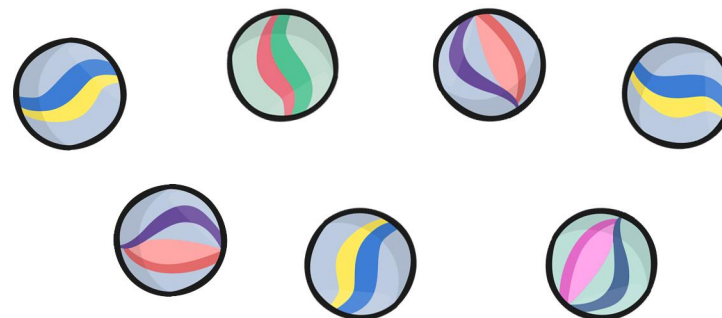
Half of the sweets are not pink. True or false?



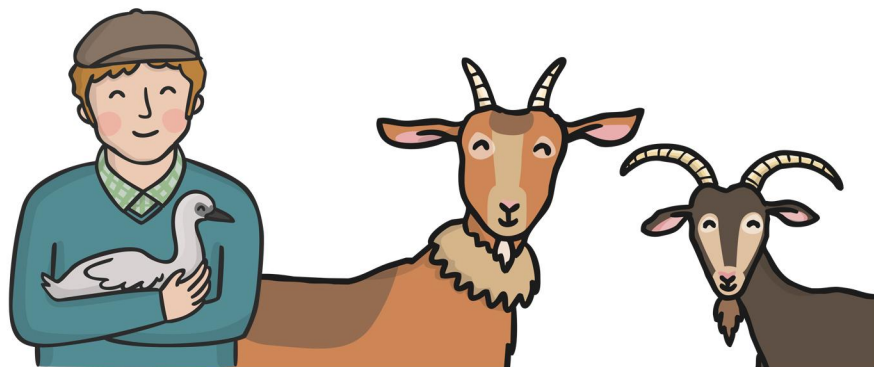
Frances builds a house out of bricks. She uses 16 bricks. $\frac{1}{4}$ of the bricks are red. How many red bricks does she use?



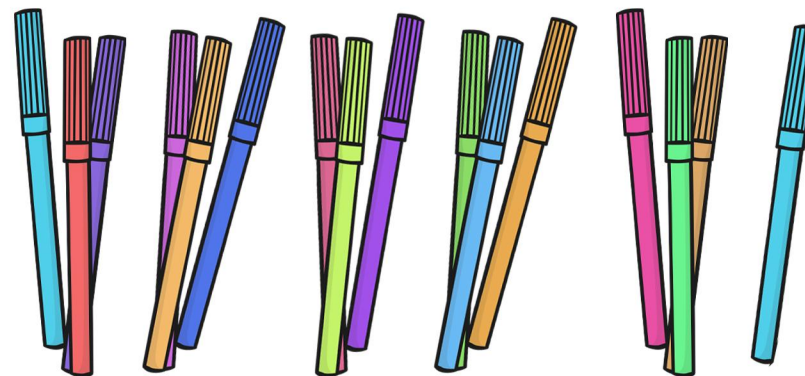
Leo lost $\frac{1}{2}$ his marbles in a game. This is what he has left. How many did he start with?



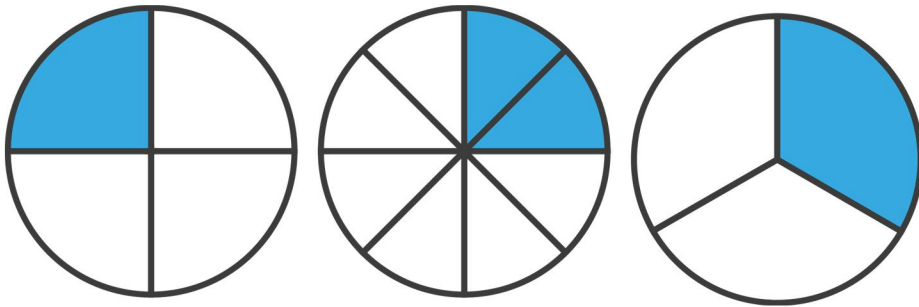
A farmer has 12 animals. $\frac{1}{4}$ of them are goats. How many goats does he have?



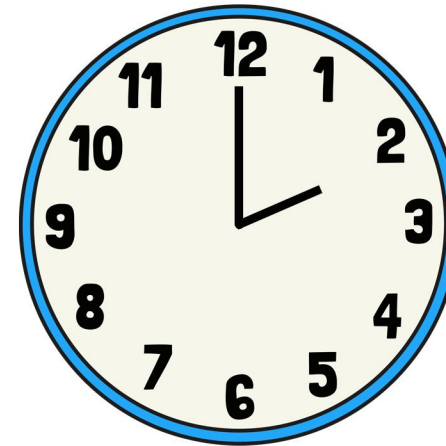
Philip gave half his felt tips to his friend. How many did he give away?



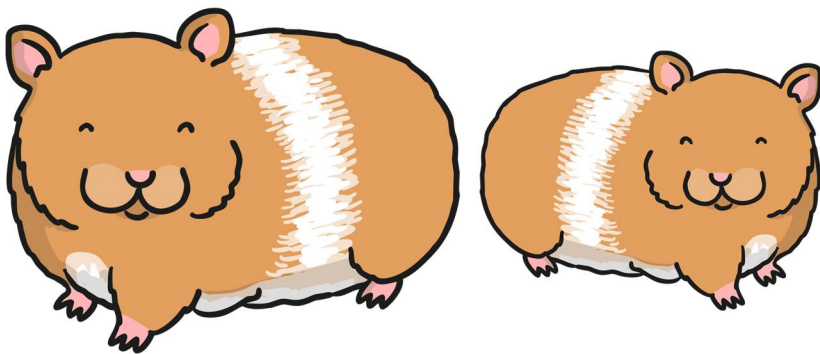
Which circles are $\frac{1}{4}$ blue?



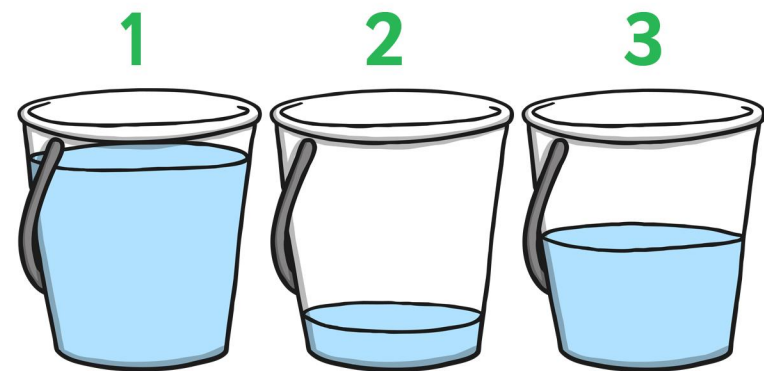
It's 2 o'clock. What time will it be in $\frac{1}{2}$ an hour?



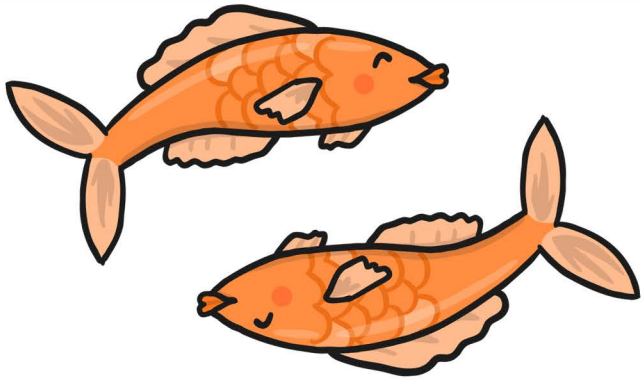
Harry's hamster is 14cm long. Theo says his hamster is $\frac{1}{2}$ as long. How long is Theo's hamster?



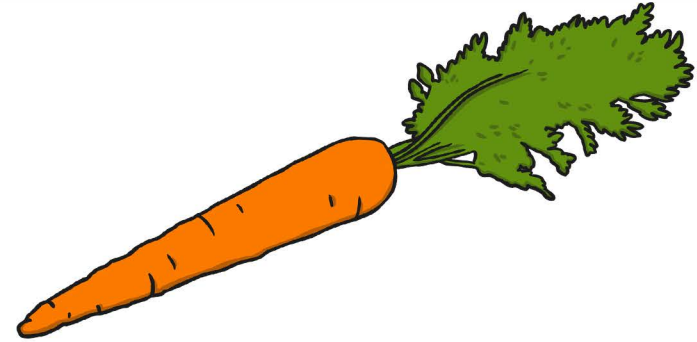
Which bucket is less than $\frac{1}{2}$ full? Which bucket is full? What would you say about bucket number 3?



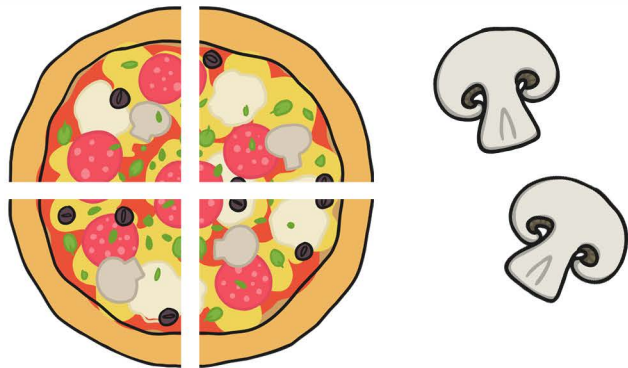
$\frac{1}{4}$ of the fish in my tank are orange. I have 2 orange fish. How many fish are in my tank?



Farmer Jake has 4 fields and he has 28 carrot plants. He wants the same amount of carrot plants in each field. How many should he plant in each field? What fraction of the carrot plants will be in each field?



Lisa cuts the pizza into $\frac{1}{4}$ s. She wants to put 2 mushrooms on each slice. How many mushrooms will she need?



I have 20 toy cars. $\frac{1}{4}$ of them are red. How many red cars do I have?

